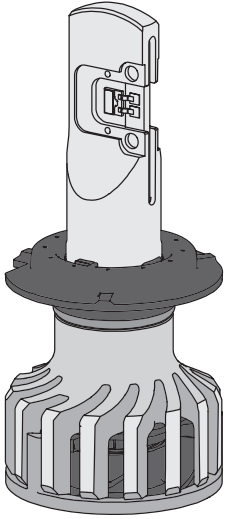


User Manual

GB	User Manual	3
繁體中文	使用手冊	15
JA	ユーザーマニュアル	28
KO	사용 설명서	41
中文	用戶手冊	54


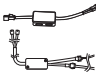






GB Thank you very much for purchasing this product. To facilitate long-term use, please carefully read this User Manual before use. After reading, keep the User Manual safe so that it is available for use at any time.

Table of Content

Packaging List.....	3
Important Information.....	3
Installation for H4 and H7.....	5
Installation for FOG, H11, HIR2, HB3 and HB4.....	6
Centre ring adjustment.....	8
Centre ring alignment of HIR2, HB3, HB4, H11 and FOG.....	8
Precautions H11 and FOG.....	10
Installation for H1 and H3.....	11
Correct beam performance.....	13
Troubleshooting.....	13
Recycling, Warranty and Service.....	14

1 Packing list

Item	Description	H7, H4	H11, FOG & HIR2	HB3	H1, H3	HB4
	Ultinon Pro lamps burners with heat sink x 2	✓	✓	✓	✓	✓
	Drivers x 2				✓	
	Hex Key x 1		✓	✓	✓	
	Plastic Tie x 8				✓	
	Additional HB4 O-Ring x 2			✓		✓
	Product Manual x1	✓	✓	✓	✓	✓

2 Important

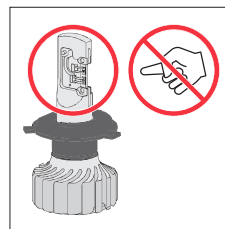
Please read these instructions carefully before installing the Ultinon Pro lamp.

Precautions

- Before installing the Ultinon Pro lamps, please ensure that the lamps are not damaged or broken, and have not fallen on the ground. If any of these conditions exist, please do not install the LED bulbs onto your vehicle.
- The temperature of the Ultinon Pro lamps burner can be very high. Do not place flammable materials, such as paper, cloth, or other materials, close to the LED bulb.
- Keep the LED bulb out of areas that are exposed to flames or prone to combustion, such as gas or petrol stations.
- Keep the LED bulb out of areas with high amounts of dust.

Warning

- The burner body and LED surface can reach very high temperatures. Do not touch the area with the hands or allow any skin contact as it may result in severe burns. Do not touch the LED ribbon bonding area! (Refer to picture below)
- The LED light intensity is very high while turned on. Do not look directly into the beam to avoid damage to the eyes.
- Do not wash the vehicle when the headlights are turned on. Changes in temperature may cause damage to or an unexpected reaction from the LED headlight.
- Do not expose the surface of the LED bulb to dust or oils, or cause the surface to bear shock or otherwise become damaged.
- Keep out of reach of children.
- Warning – Do not touch this area

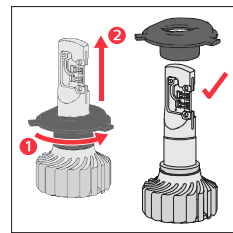


Other Information

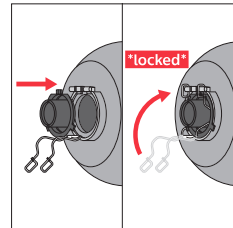
- Please ensure that the product comes from a legal sales channel.
- After installation, check that the high and low beams, the flash function, and other electrical equipment on the dashboard work and that no warnings occur. If anything abnormal happens, Philips LED CANbus adapter could be a solution.
- After installation, ensure that the waterproof gasket is fitted correctly to reduce the risk of leakage.
- Do not bend the cables excessively, especially near the heat sink area.

3 Installation steps for H4 and H7

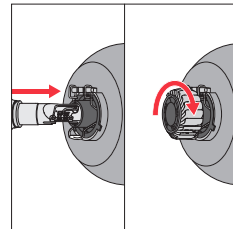
- Twist and pull off the center ring



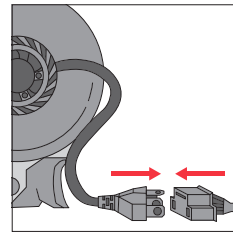
- Install and fixate center ring in headlamp



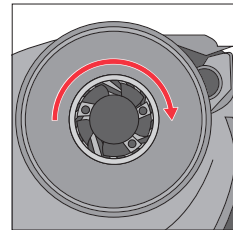
- Insert and fixate LED bulb by rotating until end stop



- Connect power line

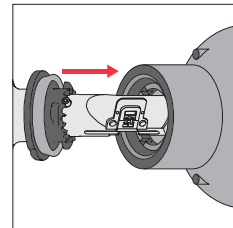


- Optional and only for H7 – Beam pattern can be optimized by rotating LED bulb, LED PCB should be vertical

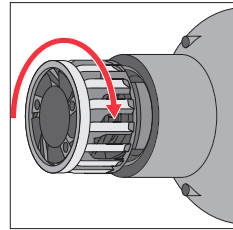


Installation for FOG, H11, HIR2, HB3, HB4

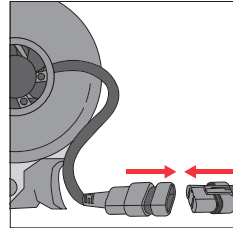
- Install the bulb inside the luminaire.



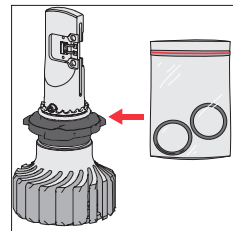
- Rotate the heatsink



- Connect the plug to the power socket

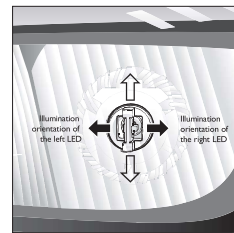


- If the original installed bulb is HB4 bulb type; please replace the red o-ring with the black o-ring.
(HB4 = black o-ring; HB3 = red o-ring)



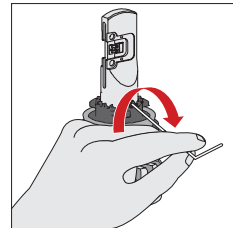
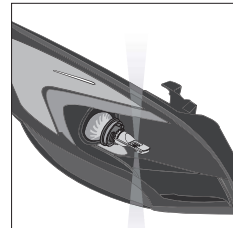
Centre ring adjustment target

- If the bulb is not in vertical position inside the luminaire, please follow below instruction for adjusting centre ring angle.
- Make sure the LED emit light to the left and right, burner is in vertical position

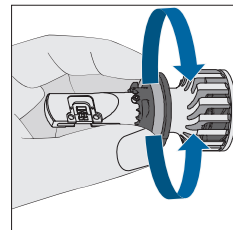


Centre Ring alignment of HIR2, HB3, HB4, H11 and FOG

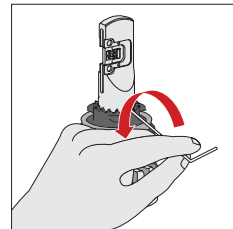
- Bulb not perpendicular (Not preferred)
- Screw inwards the two reference screws with the Hex key.



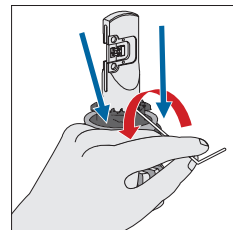
- Rotate burner over the centre ring



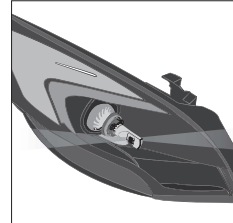
- Screw outwards the two reference screws.



- For easy adjustment and easy screwing out it is necessary to apply force to pull the centre ring downwards.

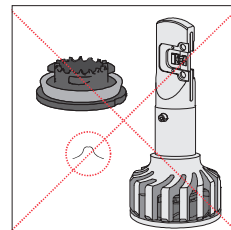


- Bulb perpendicular (Preferred)

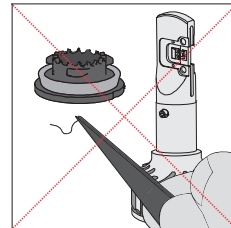


Precautions for H11 / FOG

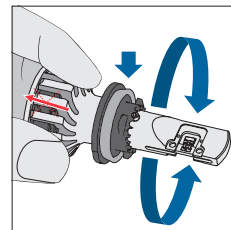
- Do not disassemble. Risk of small component (spring) coming loose



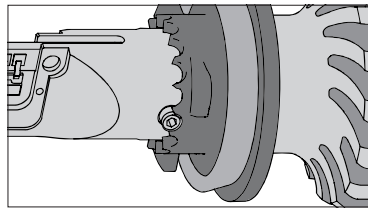
- Do not disassemble. Special tools are required for re-assembly



- Keep centre ring pressed towards the heatsink and the burner.

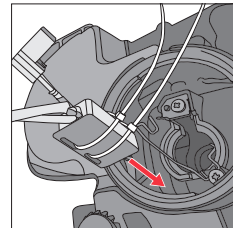


- Screw top should be same height as centre ring surface after the adjustment

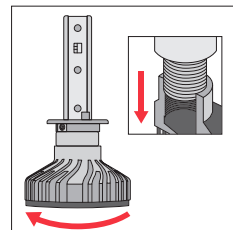


Installation for H1 and H3

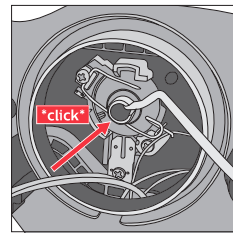
- Fix the driver box inside the luminaire firstly.



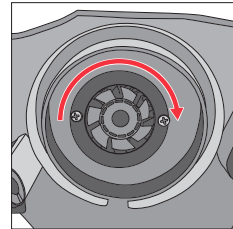
- Screw out the heatsink from the burner



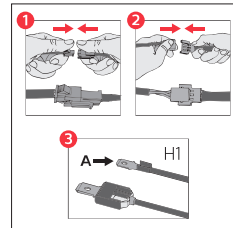
• Fix the burner onto the luminaire.



• Screw on the heatsink onto the burner.



• Connect the cable between driver to burner and driver to power socket.



Correct beam performance

- Correct beam with clear cut-off:
Superior visibility in farfield.
Reduced glaring, enhancing driver and traffic safety



4 Troubleshooting

If the Ultinon Pro fails to operate, please perform the following actions:

1. Check that the power connectors are well connected.
2. Ensure that the vehicle headlight switch is in the "ON" position.
3. Ensure that the vehicle battery has enough power to power the Ultinon Pro

5 Recycling



Your product is designed and manufactured with high quality material and components that can be recycled and reused. The following symbol attached to the product signifies that the product is covered by the European Directive 2002/96/EC.



Never dispose of the product with other waste. Please inquire about the local regulations about the separated collection of electrical and electronic products. The correct disposal of used old products helps prevent potentially negative consequences on the environment and human health.

6 Warranty and Service

If you have any problems with the product or need service or need information, please visit www.philips.com/automotive or contact the Philips call center in your country. If there is no call center in your country, please consult your local Philips dealer.

Warranty terms

Philips does not warrant its goods against any defect or damage caused by transportation, storage, improper installation, maintenance, internal or external hostile environment, misuse, abuse, negligence, accident, modification, tampering, the attachment of any unauthorized accessory, alteration to the goods, or any other conditions whatsoever that do not constitute a defect in material and/or workmanship. Philips sole responsibility under this warranty shall be, at its option, to either repair or replace any goods which fail during the warranty period, provided that Buyer has promptly reported same to Philips in writing, and complies with the provisions of this Warranty.

In case of warranty claim, please provide the following information together with proof of purchase:

Name _____ address _____

Phone _____ postal code _____

Purchased from: (please provide name and location of retail outlet)
